

# SBRT phantom

Ensure target localization  
and patient repositioning

Compatible for plan adaptation in MR-Linac



QA in SBRT treatments

## End-to-End QA

SBRT requires precise target localization, patient immobilization, and frequent positioning checks to avoid significant dose deposition in critical organs at risk. SBRT phantom by offering dosimetry options within the lung area and vertebrae/bone is an ideal End-to-End QA tool for radiosurgical body treatments.

## True-to-life human's anatomy

SBRT phantom is an anthropomorphic 3D-printed phantom that simulates the anatomy of an abdominal case, with bone and tissue-equivalent materials. The unique advantage of having realistic bone and soft-tissue contrast in both CT and MR imaging, makes SBRT phantom an excellent tool for online adaptation of advanced SBRT techniques.

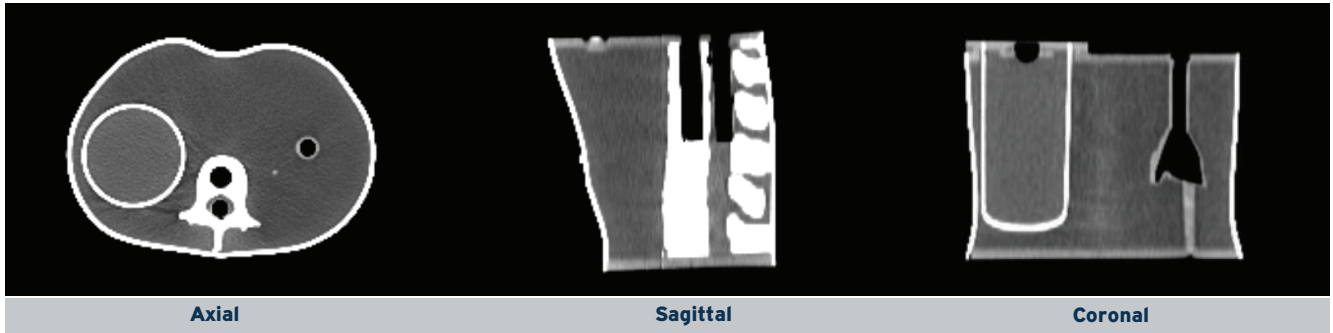
## Accurate localization

SBRT phantom is set up and treated just like a real patient. Through target localization as in the clinical workflow, it provides confidence in advanced and challenging SBRT techniques.



# SBRT phantom

Ensure target localization and patient repositioning



## Specifications

### # MODEL INCLUDES

QTY	DESCRIPTION
1	Water filling 3D printed SBRT phantom. Dimensions: (X,Y,Z) = (249,5 mm, 178,2 mm, 177,6 mm)
2	Ion chamber/diode/diamond detector insert fixed position in vertebrae: plug of Ø12mm, material PMMA
1	Ion chamber/diode/diamond detector Variable Position dosimetry insert: plug of Ø12mm and user-defined depths, material PMMA
1	Film dosimetry cassette* with 4 pins for registration purposes in 2 different orientations; sagittal or coronal: 80 mm x 145 mm (inner dimensions: 70 mm x 145 mm), material Real Water
1	3D polymer gel dosimetry insert combined with 3D dosimetry service: Cylinder of 160 mm height and Ø 80 mm (inner dimensions: 140 mm x Ø 74 mm), material glass
1	The real patient's anonymized CT images through link to a secured file sharing platform
1	60-month warranty
1	User manual

\*: Can be combined with remote 2D dosimetry service

### # OPTIONAL ACCESSORIES

QTY	DESCRIPTION
1	OSL dosimetry cassette** with a 4 mm resolution cross design of 17 pockets for nanoDot™ OSL dosimeters in 2 different orientations; sagittal or coronal: 80 mm x 145 mm (inner dimensions: 70 mm x 145 mm) with 4 acrylic rods (5 mm diameter, 10 mm height) for registration purposes, material Real Water
1	Exchangeable lung insert: plug of Ø12mm. It can accommodate Ion chamber/diode/diamond detector inside.
1	Exchangeable acrylic insert: plug of Ø12mm. It can accommodate different metallic implants.

\*\* : Can be combined with remote point dosimetry service